



Company profile

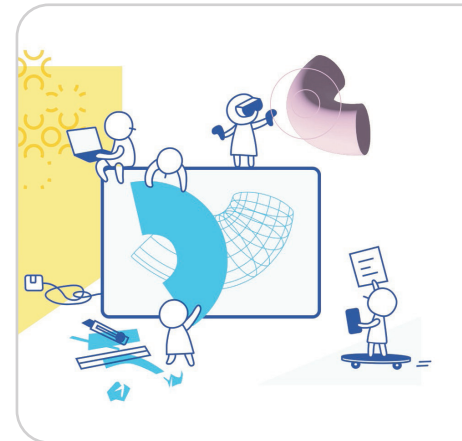
Studio Fluffy from Karlsruhe supports companies in data-driven product development.

Our interdisciplinary team of UX design, mathematics, and software development creates algorithms, AI and machine learning models, as well as simulations for industries such as MedTech, semiconductors, automotive, and gaming.

Our goal: Make large datasets usable – with solutions that combine intuitive interaction with high-performance computing. This way, complexity becomes not only manageable, but a driver for innovation and new thinking.

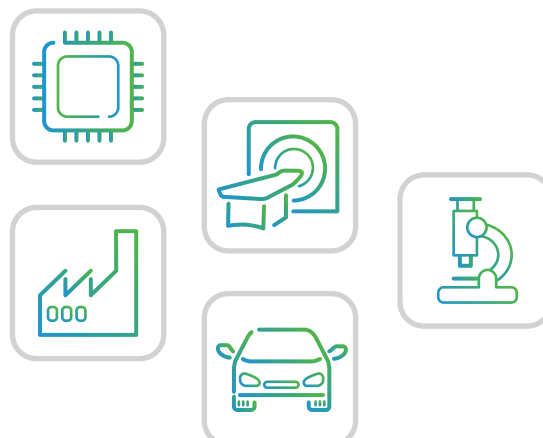
Areas of expertise

- Scientific Computing
- Data Science
- Artificial Intelligence
- User Experience
- Software Development



Industries

- Semiconductors
- Industry
- Healthcare
- Automotive
- Research



Focus areas

- ☐ Testing & Validation
- ☒ **Modelling&Simulation**
- ☐ Automation & Internet of Things
- ☒ **Implementation & Integration**
- ☐ Safety & Security
- ☐ Research&Founding
- ☒ **Digitalization & Artificial Intelligence**
- ☐ Coaching & Education

Services

Our staged approach allows us to select the right level of depth and dynamics for each project phase – from a quick Concept Sprint to lay a solid foundation for an idea, to the Proof of Concept, and all the way to comprehensive project implementation.

This ensures that your requirements are implemented precisely, while costs and resources are efficiently managed.

Our services at a glance:

- **Algorithm Development – Analysis, optimization, simulation**
- **AI & Machine Learning – Pattern recognition and forecasting**
- **Software Architecture – Modular, scalable systems**
- **Data Science & Big Data – Analysis and processing**

Product: DashSet

Finally make large datasets usable – easily and effectively.

DashSet is the modular platform for explorative data analysis and digital twins – from the cloud to the edge device.

It simplifies making large, heterogeneous datasets from sensors, simulations, or production systems visible, usable, and comparable.

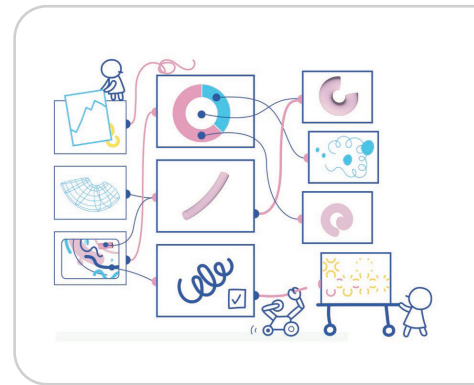
With DashSet, you can:

- Process raw data and derive actionable insights
- Prepare data for AI training on edge devices
- Unify data sources and analyze them in real-time
- Derive KPIs and make data-driven decisions
- Enrich signals, e.g., through FFT or feature extraction
- Build processing chains intuitively, create variations, and share them

DashSet is intuitively operable – no programming knowledge required, thanks to a clear web frontend with interactive workflows. At the same time, the platform is flexible: Custom algorithms, Python scripts, or existing modules can be seamlessly integrated.

This way, DashSet combines usability with technical depth – for anyone who wants to not only collect data but truly understand and use it.

Product Website: dashset.ai



Studio Fluffy

Gesellschaft für Kunst und angewandte Mathematik UG (haftungsbeschränkt)

Gottesauer Straße 33a
76131 Karlsruhe

Phone +49 (0) 721 46711180
Mobile +49 (0) 179 920 88 07

sierk.schmalzriedt@studiofluffy.com
www.studiofluffy.com

Partnerships & Memberships: • CyberForum

